

Case Report

## Bowens Disease on Finger – A Rare Presentation

Dr. V. Sri Lakshmi Priya\*, Dr. Hemalatha Ganapathy, Dr. Subhshree  
Sree Balaji Medical College and Hospital, Chrompet, Chennai – 44, India

### \*Corresponding author

Dr. V. Sri Lakshmi Priya

Email: [srilakshmipriyap@gmail.com](mailto:srilakshmipriyap@gmail.com)

---

**Abstract:** Bowen's disease is a squamous cell carcinoma in situ of the epidermis. It commonly presents as solitary plaque involving both sun exposed and unexposed areas of the skin. Here we present a case of 72 year old male patient presented with swelling in the ring finger.

**Keywords:** Bowens, Swelling, Ring finger

---

### INTRODUCTION

Bowen's disease is an intra epithelial carcinoma of the epidermis. [1,2] It can be found on both sun exposed and unexposed areas. Head and neck and lower limbs are the common sites. We are presenting this case for its unusual site of presentation and for the morphology of presentation [6].

### CASE REPORT

A 72 year old male presented with a single swelling in the right ring finger since one month with tenderness. Excision biopsy was done which showed epidermal hyperkeratosis, acanthosis [Fig 1]. Along with elongated down growths showing loss of polarity, with windblown appearance of the cells [Fig 2 & 3]. Mitotic figures, occasional multi nucleated giant cells and occasional areas of necrosis are also seen [Fig 4].

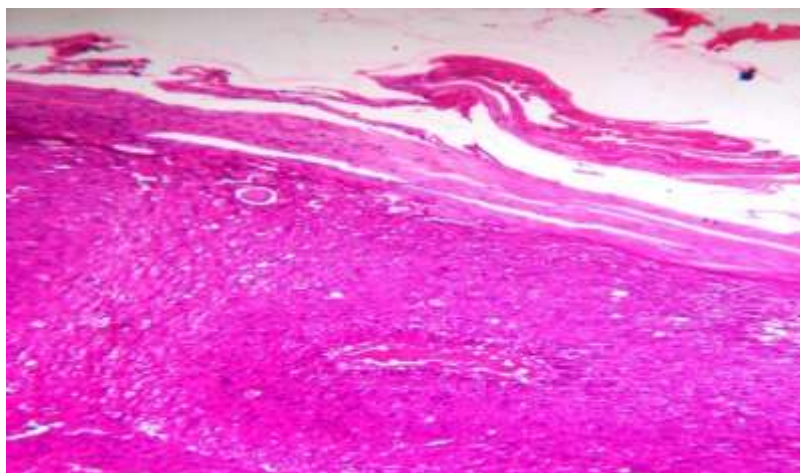
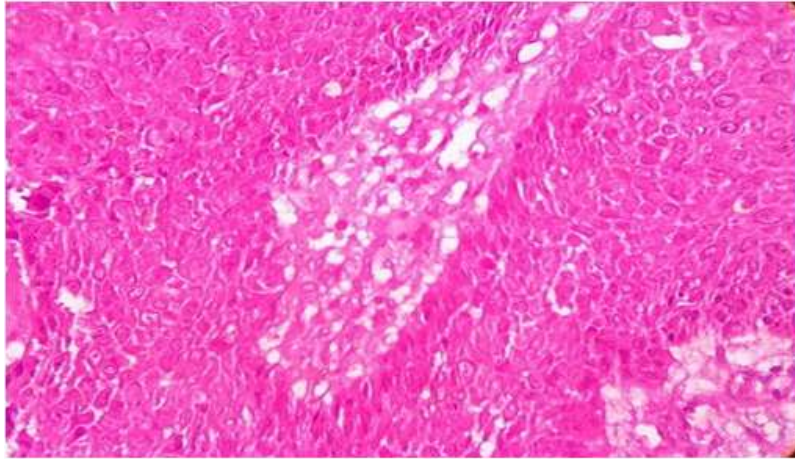
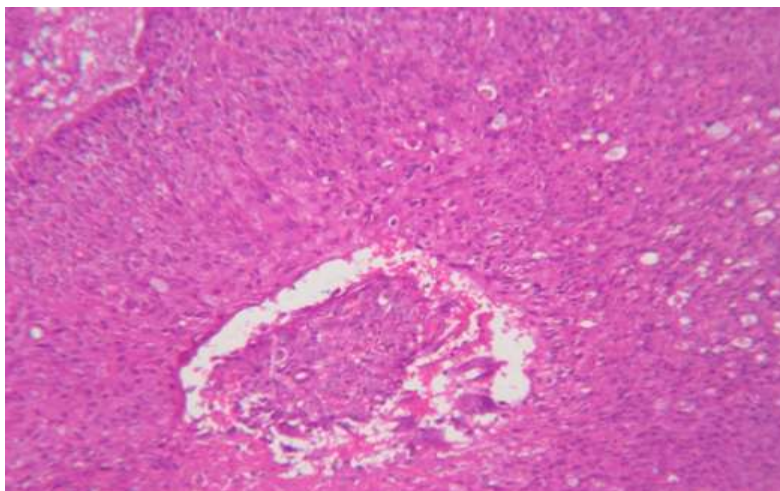


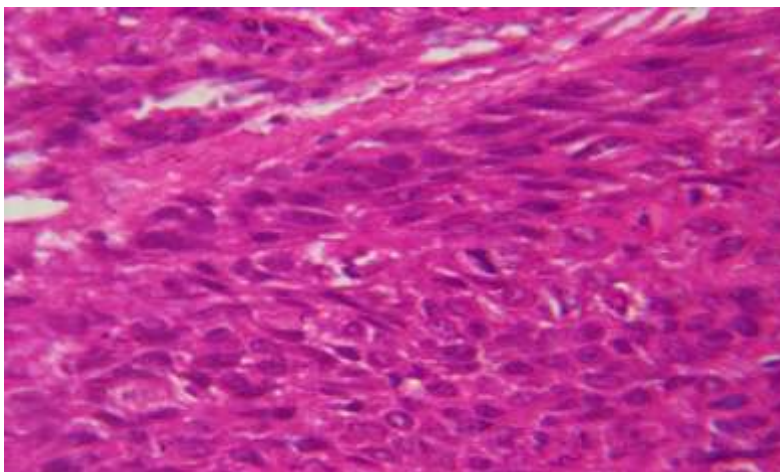
Fig 1: HPE Showing Hyperkeratotic Epidermis



**Fig 2: HPE Showing Elongation of Rete Ridges**



**Fig 3: HPE Showing Wind Blown Appearance**



**Fig 4: HPE Showing Mitotic Figure and Multinucleated Giant Cell**

#### **DISCUSSION**

Bowen's disease is an intraepithelial squamous cell carcinoma. It usually presents as an erythematous, scaly plaque often asymptomatic [1]. Our case was unusual for the following reasons. First, the way of presentation. Bowen's disease generally presents as

erythematous, scaly plaques [2]. In our case the presentation is swelling with tenderness. Second is the site, many studies from the literature reported the commonest sites being sun exposed areas [3]. Kossard et al done study in one thousand one cases of bowens disease and found that head and neck be the commonest

followed by lower limb, upper limb then torso [4]. There are only very few cases of bowens disease reported in the digits [5,6]. Hence it remains a rare site.

#### **CONCLUSION**

This case is presented here for its rare site of presentation and its rare morphology.

#### **REFERENCES**

1. Duncan KO, Geisse JK, Leffell DJ; Epithelial precancerous lesions. In: Wolff K, Goldsmith LA, Katz SI, Gilchrest BA, Paller BS, Leffell DJ, editors. Fitzpatrick's Dermatology in General Medicine, 7<sup>th</sup> ed. New York: Mcgraw-Hill; 2008; 1007-27.
2. Strayer DS, Santa Cruz DJ; Carcinoma in situ of the skin: A review of histopathology. J Cutan Pathol 1980; 7:244-59.
3. Thestrup-Pedersen K, Ravnborg L, Reymann F; A description of disease in 617 patients. ActaDermVenereol 1988; 68:236-9.
4. Kossard S, Rosen R; Cutaneous Bowen's disease: An analysis of 1001 cases according to age, sex and site. J Am Acad Dermatol 1992; 27:406-10.
5. M R Swaroop, Manas S N, Basavaraj HB, Sathyanarayana BD; Bowen's Disease: A Series of Cases.
6. Singh S, Khaitan B.K, Sharma M.C, Seenu V, Kumawat M, Chatterjee P; Bowens disease on Finger; A Diagnostic and Therapeutic challenge Indian J Dermatol Venerol Leprol 2013; 79(2): 227-30.
7. Gordon KB, Garden JM, Robinson JK; Bowen's disease of the distal digit: Outcome of treatment with carbon dioxide laser vaporization. Dermatol Surg 1996; 22:723-8.